

Truedeal Building Services Ltd
Maritime House
143 Woodville Street
Glasgow G51 2RQ

1.1 HEALTH & SAFETY POLICY

STATEMENT OF POLICY

The Directors of TBS Ltd. Mechanical Services Engineers & Contractors, are committed to discharging their obligations under the Health and Safety at Work, Etc. Act 1974, The Management of Health and Safety at Work Regulations 1999, and all other relevant statutory legislation. They will seek to provide a healthy and safe working environment for their Employees and will endeavour to ensure the safety and health of all others who could foreseeably be affected by activities under their control.

In particular, attention will be given to the provision and maintenance of :-


- 1) Plant, equipment and systems of work that are safe.
- 2) Safe arrangements for the use, handling, storage and transport of articles, goods and substances.
- 3) Sufficient information, instruction, training and supervision as to enable all employees to avoid hazards and contribute positively to their own safety and health at work.
- 4) A safe and healthy place of work and safe access to it.
- 5) Adequate welfare facilities.

To achieve a high standard of health and safety the active co-operation of all Employees is essential. Employees are reminded of their own duties under the Health and Safety at Work Etc. Act 1974 and the Management of Health and Safety at Work Regulations 1999, to take care of their own safety and that of other persons and to co-operate with their Employer so as to enable them to carry out their responsibilities successfully.

The Organisation, Responsibilities and Arrangements to enable this Policy on Health and Safety to be effective are contained in the attached documents.

This Policy and associated documents will be revised annually or as and when required and will be publicised within the Company.

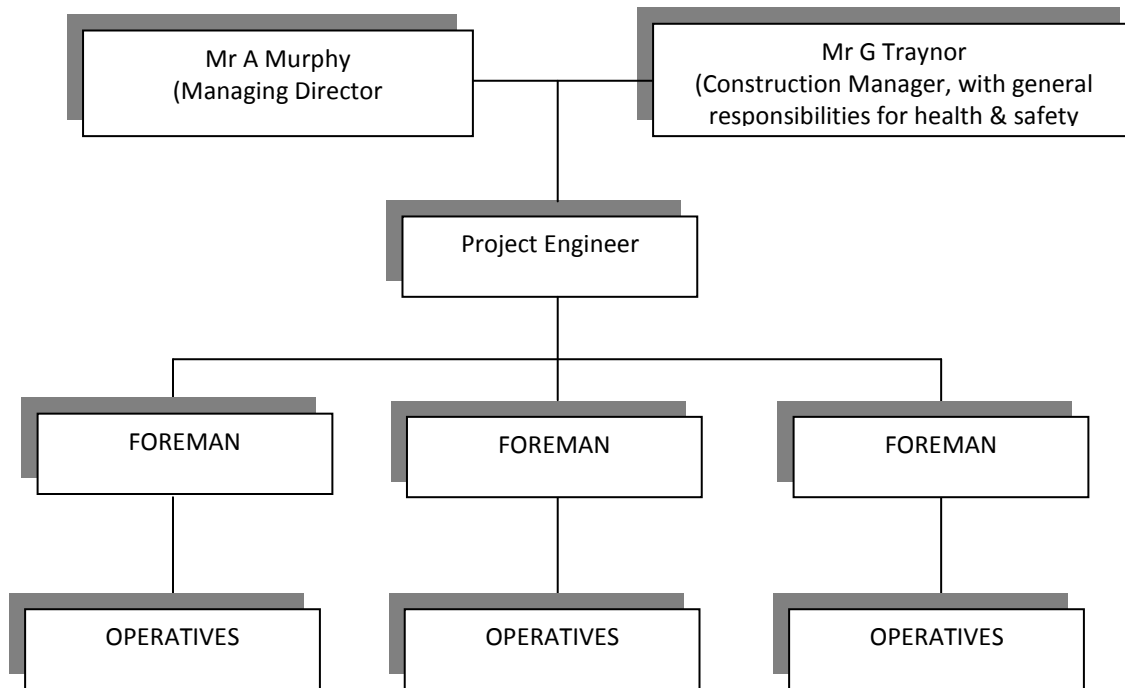
Signed 
Mr. A. Murphy
Managing Director

Signed 
Mr G. Traynor
Construction Manager
With general responsibilities for
Health and Safety.

Date January 2014

Truedeal Building Services Ltd
Maritime House
143 Woodville Street
Glasgow G51 2RQ

1.2 ORGANISATION FOR HEALTH & SAFETY



Truedeal Building Services Ltd
Maritime House
143 Woodville Street
Glasgow G51 2RQ

HEALTH AND SAFETY AT WORK ETC. ACT 1974

1.3 RESPONSIBILITIES FOR HEALTH AND SAFETY

1.3.1 THE MANAGING DIRECTOR, **Mr. A. Murphy**, and THE CONSTRUCTION MANAGER, **Mr. G. Traynor**, shall ensure that: -

- The Company Health and Safety Policy is made known to the Employees and implemented within their area of control.
- Employees are trained, instructed and given information to ensure their competence to carry out their work activities safely and without risks to their health.
- Personal Protective Equipment is provided as appropriate and that Employees use such equipment where and when the hazards exist.
- Injury accidents are reported, recorded, investigated and where appropriate notified to the enforcing authority.
- Work equipment provided is suitable for the intended use and is maintained in a safe condition.
- Procedures are established for dealing with fire and that employees are trained in fire precautions as appropriate to their work activities.
- Matters brought to their attention, relating to health and safety, are dealt with and remedial action taken where necessary.
- Risk Assessments as required by any particular Regulations are carried out by a competent person and the findings recorded.
- Health and safety advice and assistance is made available to them and the appointment made known to Employees.
- In the preparation of Contract Documentation due regard is taken of health and safety in relation to the installation and method of work to be adopted.
- Where sub-contractors are engaged their Health and Safety Organisation and Arrangements are vetted and their activities monitored.

Truedeal Building Services Ltd
Maritime House
143 Woodville Street
Glasgow G51 2RQ

1.3.2 The Project Engineer shall ensure that-

- He has read and understands the Company Policy and arrangements for Health and Safety
- Work is planned in order that it can be safely carried out and due cognisance is taken of any potential hazards associated with the work such as asbestos, work at height or any lifting operations
- Risk assessments are undertaken and suitable method statements are prepared as necessary
- Materials, tools and equipment required are suitable for the work to be undertaken and that where necessary suitable training or instruction will be provided as appropriate
- Adequate arrangements will be made on all projects for the provision of suitable welfare facilities, first aid and fire safety.
- Where other contractors are involved that suitable liaison is established to ensure the work can progress in a safe manner.
- Operatives are given a site safety induction, advised of the methods to be employed to carry out the work safely and aware of emergency procedures, etc.

Truedeal Building Services Ltd
Maritime House
143 Woodville Street
Glasgow G51 2RQ

1.3.3 FOREMEN shall ensure that -

- They have read and understand the Company Policy and Arrangements for Health and Safety.
- Employees carry out their work in accordance with the safe methods of work and in compliance with Company procedures.
- Personal Protective Equipment as provided is suitable, maintained in good condition and used where and when appropriate.
- Adequate supervision is provided and that instructions are followed to avoid risks of injury or to the health of employees or other persons.
- All injuries are reported and investigated in accordance with the Company accident procedure.
- Plant and equipment is maintained in a safe condition and used in a safe and proper manner.
- Matters brought to their attention relating to health and safety are acted upon and where they have not the authority to deal with such the Managing Director or the Construction Manager is informed.

Truedeal Building Services Ltd
Maritime House
143 Woodville Street
Glasgow G51 2RQ

1.3.4 EMPLOYEES shall ensure that -

- They carry out their work activities with due regard to their own safety and to the safety of other persons.
- Any hazard, unsafe condition or matters of concern to them are brought to the attention of the Foremen, the Managing Director or the Construction Manager.
- Personal Protective Equipment provided by the Company is used by them and any loss or damage reported as soon as possible.
- Training and instructions given to them is followed in order to avoid accidents and risks to health.
- They are familiar with the action to be taken in case of fire.
- All injury accidents and dangerous occurrences are reported by them without delay.